

AKR3985/IX



- ★ Electronic Buttons Control
- ★ Slim Front Panel Design
- ★ LED Lighting



Basic Specifications

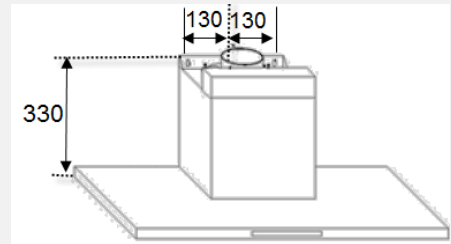
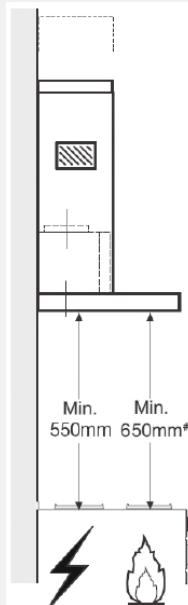
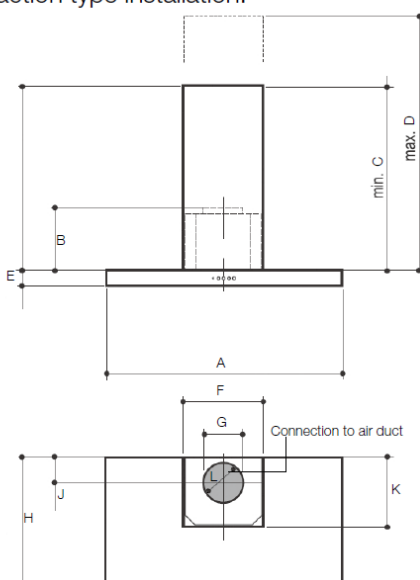
- Max. extraction (unrestricted) : 1000m³/hr
- Number of motor : 1
- Number of lamp : 2
- Length of chimney (lower / upper) : 480 / 475mm
- Diameter of air duct : 150mm
- Socket / Fuse spur unit : 13A
- Length of power cord : 1300mm
- Product Dimensions (mm) : 510-970H x 900W x 480D
- Colour : Stainless Steel
- Country of origin : Asia

Special Features

- Extraction or Recirculation operation
- Electronic buttons control
- Number of speeds : 4
- Delay off
- Slim front panel design
- LED Lighting
- Washable aluminum filter : 3

INSTALLATION

Extraction type installation:



A	B	C	D	E
900	353	480	940	30
F	G	H	J	K
308	150	480	85	267

* For recirculation type, no exhaust duct is needed but carbon filter must be installed.
 † From upper edge of pan support.

Unit: mm
 Above diagram is not to scale